



DISTRIBUTOR OF **Jenkins**  
IRON & STEEL

RACZYNSKI SALES INC.

Phone: 306-722-7661

Email: [racsale@sasktel.net](mailto:racsale@sasktel.net)

Website: [grainsystems.ca](http://grainsystems.ca)

### Skeleton Grapple

JENKINS IRON & STEEL



- » bolt on side plates
- » 3" spacing between teeth
- » fully greasable pivot points
- » hydraulic covers included

Single Grapple: **48" 62"**  
Double Grapple: **62" 68" 74" 78" 84"**

### Debris Grapple

JENKINS IRON & STEEL



- » 1/2" material
- » 1/2" hardened cutting edge
- » 6" spacing between teeth
- » hydraulic covers included

Sizes: **64" 72" 78" 84"**

### Brush Grapple

JENKINS IRON & STEEL



- » 3/4" material thickness for durability
- » 2 - 3000lb hydraulic cylinders
- » replaceable pin on digging teeth

Sizes: **66" 76" 86"**

### Super Duty Brush Grapple

JENKINS IRON & STEEL



- » Independent grapple arms
- » 3/4" material thickness for durability
- » 2 - 3000lb hydraulic cylinders
- » replaceable pin on digging teeth

Sizes: **76" 86"**

### Tine Grapple

JENKINS IRON & STEEL



- » 2 1/4" round tines
- » 1/2" grapple claw thickness
- » 4" spacing between tines
- » hydraulic covers included

Sizes: **63" 70" 78" 83" 88"**

### Earth Auger

JENKINS IRON & STEEL



- » 2" hex drive unit
- » planetary gear box
- » self centering
- » heavy duty commercial frame

Bit sizes: **4" 6" 9" 12" 15" 18"**  
**20" 24" 30" 36"**

### Snow Bucket

JENKINS IRON & STEEL



- » 3' tall, 3 1/2' deep for high volume
- » 3/4" reversible bolt on cutting edge
- » commercial grade

Sizes: **6' 7' 8' 9' 10' 12'**

### Snow Pushers

JENKINS IRON & STEEL



- » hardened steel cutting edge
- » free floating skid plates
- » optional back drag
- » high volume screen
- » rubber edge also available

Sizes: **7' 8' 10'**

### Deluxe Snow Pusher

JENKINS IRON & STEEL



- » oscillating quick attach plate
- » full trip cutting edge
- » free floating sides
- » optional high volume screen or back drag

Sizes: **6' 8' 10'**

### Landscape Bucket

JENKINS IRON & STEEL



- » 3/4" reversible bolt on cutting edge
- » 3/16" bucket material
- » exact yardage for vendors

Sizes: **1/2 yard 1 yard**

### Rock Bucket

JENKINS IRON & STEEL



- » 3/8" material
- » 1/2" hardened cutting edge
- » 3" spacing between teeth

Sizes: **62" 68" 74" 78" 84"**

### Low Profile Dirt Bucket

JENKINS IRON & STEEL



- » 3/4" reversible bolt on cutting edge
- » 3/16" bucket material
- » HD - 1/4" material

Sizes: **62" 68" 74" 78" 84"**



**Low Profile HD Dirt Bucket w/ Teeth**

JENKINS IRON & STEEL

- » heavy duty 3/4" cutting edge
- » replaceable pin on teeth
- » 1/4" bucket material

Sizes: **62" 68" 74" 78" 84" 96"**



**Low Profile HD Grapple Bucket**

JENKINS IRON & STEEL

- » 3/16" bucket material
- » 3/4" reversible bolt on cutting edge
- » removable bolt on side plates
- » hydraulic covers included

Sizes: **62" 68" 74" 78" 84"**



**High Capacity Grapple Bucket**

JENKINS IRON & STEEL

- » 3/16" bucket material
- » extremely high volume
- » 80" opening

Sizes: **6' 7' 8'**



**4 in 1 Bucket**

- » used for dozing, land leveling, grappling, dumping etc
- » 3 reversible, replaceable 3/4" cutting edges

Sizes: **72" 78" 82"**



**4 in 1 Bucket w/ teeth**

JENKINS IRON & STEEL

- » used for dozing, land leveling, grappling, dumping etc
- » 3 reversible, replaceable cutting edges
- » fitted with replaceable tip excavator teeth

Sizes: **72" 78" 82"**



**High Dump Bucket**

JENKINS IRON & STEEL

- » 3/4" reversible bolt on cutting edge
- » screening in the back allows for cutting edge visibility & ease of use

Sizes: **74" 84"**



**Pallet Forks**

- » walk through style for easy access to loader
- » adjustable forks rated at 5500 lbs
- » manually adjustable

Fork Lengths: **4' 5' 6'**

Carriage Widths: **4' 5' 6'**



**Bale Spear**

JENKINS IRON & STEEL

- » 49" or 39" German spears
- » heavy duty square box frame
- » increased angle
- » modified to fit a variety of loader models

Common Configurations: **2 prong 3 prong 4 prong 4 prong (Square)**



**Hydraulic Sliding Pallet Forks**

JENKINS IRON & STEEL

- » forks rated at 5500 lbs
- » hydraulic powered adjusting forks

Fork Lengths: **4' 5' 6'**

Carriage Widths: **4' 5' 6'**



**Trencher**

JENKINS IRON & STEEL

- » double standard ABF
- » welded teeth w/ cemented carbide edges
- » 1/2 rock & frost - half teeth are conical carbide

Digging Depth: **24" 36" 42" 48" 60"**

Digging Width: **6" 8" 10" 12"**



**Backhoe**

JENKINS IRON & STEEL

- » 12" or 18" wide HD bucket
- » replaceable pin on teeth
- » 6 1/2' or 8 1/2' digging depth
- » optional mechanical thumb pictured

Bucket Sizes: **12" 18"**



**Hydraulic Angle Sweeper**

JENKINS IRON & STEEL

- » hydraulic angle
- » poly and steel bristles
- » Eaton Char-Lynn motors
- » 14 pin harness included

Sizes: **5' 6' 7' 8'**

### Pickup Bucket Sweeper Broom

JENKINS IRON & STEEL



- » Eaton Char-Lynn motors
- » poly and steel bristles
- » 3/4" reversible bolt on cutting edge

Sizes: **74" 84"**

### Land Leveler

JENKINS IRON & STEEL



- » 2 bucket hooks on top
- » replaceable 1/2" cutting edges
- » removable, replaceable screen for sifting, scooping material and rock
- » optional scarifying teeth

Sizes: **68" 74" 78" 84"**

### Soil Conditioner

JENKINS IRON & STEEL



- » Eaton Char-Lynn hydraulic motor that is both standard/high flow ready
- » 10" drum spinner
- » 4" x 8" heavy walled rectangular backbone
- » 14 pin harness included

Sizes: **6' 7'**

### Tiller

JENKINS IRON & STEEL



- » dual Eaton Char-Lynn motors
- » 4 swing away blades per spindle
- » bi-directional tilling
- » zero maintenance direct drive

Sizes: **5' 6' 7'**

### Dozer Blade

JENKINS IRON & STEEL

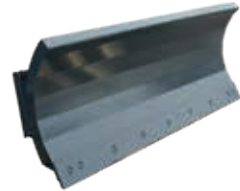


- » full hydraulic tilt
- » 5/16" face plate gusseted throughout
- » reversible & replaceable bolt on cutting edge
- » commercial grade
- » 14 pin harness included

Sizes: **6' 7' 8'**

### Hydraulic Angle Snow Blade

JENKINS IRON & STEEL



- » full trip blade with dual cylinder hydraulic angle
- » adjustable blade height
- » bolt on replaceable cutting edge

Sizes: **6' 7' 8' 9' 10'**

### Super Winged Hydraulic Angle Snow Blade

JENKINS IRON & STEEL



- » 2' hydraulic wings
- » oscillating quick attach plate
- » full trip edge
- » full trip wing edge
- » 14 pin harness included

Sizes: **6' 7' 8'**

### Brush Mower

JENKINS IRON & STEEL



- » 1/4" HD free floating deck
- » Eaton Char-Lynn motor
- » easy to replace blades
- » cuts up to 6" material
- » optional wheel kit and pushover bar

Size: **5' 6' 7'**

### Super Duty Mower

JENKINS IRON & STEEL



- » 1/4" HD free floating deck
- » Eaton Char-Lynn motor
- » 4 easy to replace blades
- » no gear box
- » 500 lbs flywheel

Size: **6' 7'**

### Post & Tree Puller

JENKINS IRON & STEEL



- » brush guard available
- » 3" x 3" tube frame
- » 1/2" steel teeth
- » 3000lb hydraulic cylinder
- » 17" opening
- » T post slot

### Stump Bucket

JENKINS IRON & STEEL



- » 64" overall length
- » 1/2" steel bucket
- » replaceable digger teeth
- » serrated top

Bucket Width: **18" tapered to 12"**

### Stump Bucket Grapple

JENKINS IRON & STEEL



- » 64" overall length
- » replaceable digger teeth
- » serrated top

Bucket Width: **18" tapered to 12"**

### Wood Splitter



- » inverted style 36" bite monster
- » 5" 30 ton cylinder and l-beam construction
- » single split AR-400 abrasion resistant blade
- » 12" blade height

### Stump Grinder

JENKINS IRON & STEEL



- » hydraulic swing & depth control
- » 25" diameter cutting wheel
- » carbide Greenteeth (rotate 3 times before replacing)
- » commercial 3/4" HD disc
- » case drain required
- » 14 pin harness included

### Concrete Hopper



- » commercial grade 3/4 yard
- » gusseting on all wear points
- » center mounted hydraulic controlled shoot
- » removable extension

### Ice Scraper

JENKINS IRON & STEEL



- » quickly removes frozen or hardened build up from solid surfaces
- » replaceable self sharpening disc
- » commercial grade frame

### Extendable Boom

JENKINS IRON & STEEL



- » 10' retracted length
- » 6' hydraulically operated second section & a 4' manual third section for a total of 20'
- » replaceable wear pads
- » commercial grade

### Receiver Hitch

JENKINS IRON & STEEL



- » makes moving trailers, implements and goose necks easier
- » long snout enables easy visibility
- » top gussets strengthen hitch

### Quick Attach Plates

JENKINS IRON & STEEL



- » 5/16" thick plate
- » 3/16" top bar
- » 3/16" gussets under bottom bar
- » full and partial backer plates available